

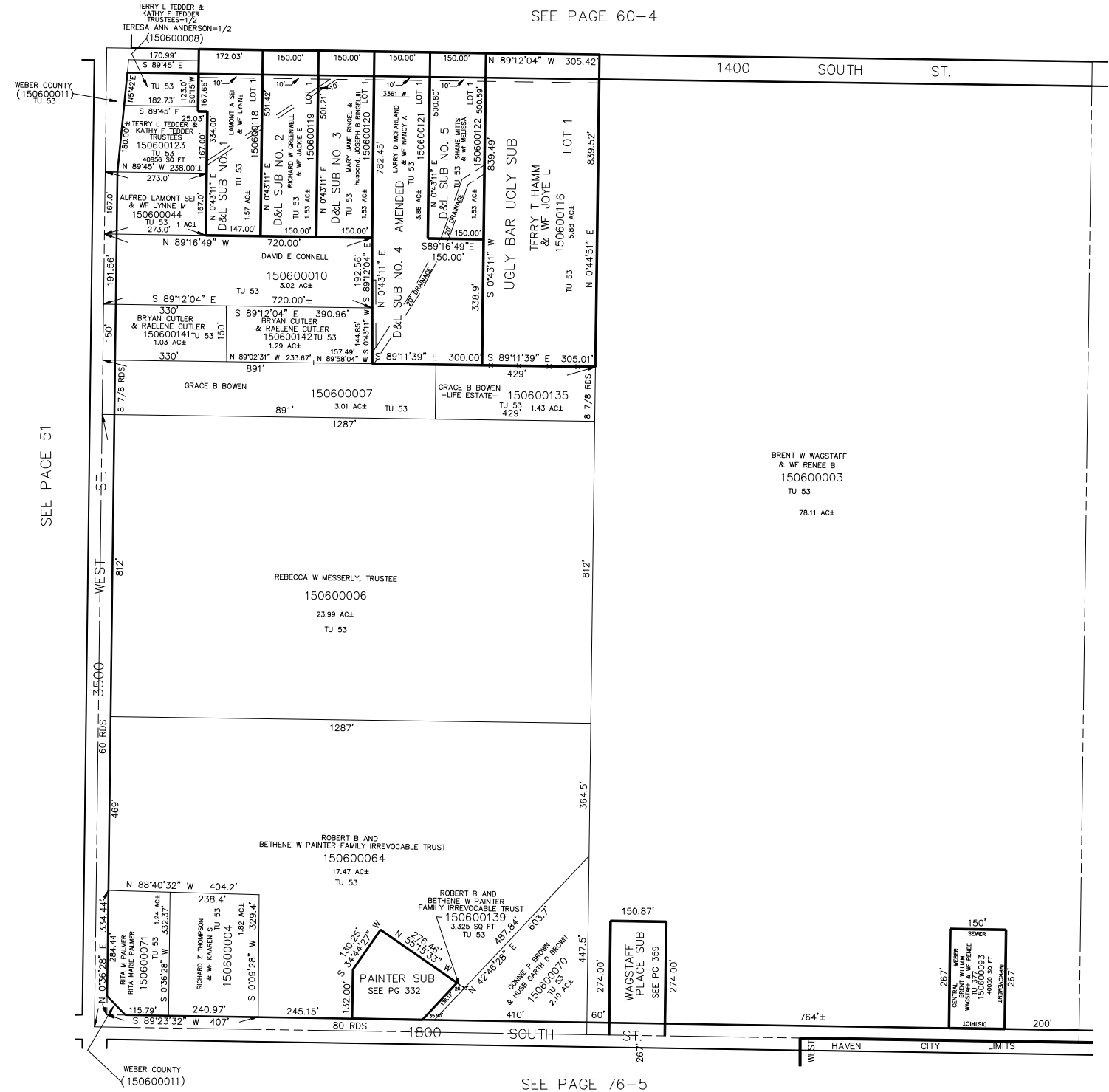
S.W. 1/4
SECTION 22, T.6N., R.2W., S.L.B.& M.

IN WEBER COUNTY

SCALE 1" = 200'

TAXING UNIT: 53, 377

SEE PAGE 60-4



WEBER COUNTY (150600011) TU 53

SEE PAGE 51

WEBER COUNTY (150600011)

SEE PAGE 76-5

BRENT W WAGSTAFF & WF RENEE B 150600003 TU 53 78.11 AC±

SEE PAGE 60-2